

# Basic Concepts



## Getting Started with OpenChoice™ Solutions

**071-1304-00**

Copyright © Tektronix, Inc. All rights reserved. Licensed software products are owned by Tektronix or its suppliers and are protected by United States copyright laws and international treaty provisions.

Use, duplication, or disclosure by the Government is subject to restrictions as set forth in subparagraph (c)(1)(ii) of the Rights in Technical Data and Computer Software clause at DFARS 252.227-7013, or subparagraphs (c)(1) and (2) of the Commercial Computer Software - Restricted Rights clause at FAR 52.227-19, as applicable.

Tektronix products are covered by U.S. and foreign patents, issued and pending. Information in this publication supercedes that in all previously published material. Specifications and price change privileges reserved.

Tektronix, Inc., P.O. Box 500, Beaverton, OR 97077

TEKTRONIX and TEK are registered trademarks of Tektronix, Inc.

Mathcad is a registered trademark of MathSoft, Inc.

MATLAB is a registered trademark of The MathWorks, Inc.

ActiveX, Microsoft, Visual Basic, Visual C++, Visual Studio, and Windows are either registered trademarks or trademarks of Microsoft Corporation in the United States and/or other countries.

LabVIEW and LabWindows/CVI are trademarks of National Instruments Corporation.

Tektronix, Tek, TekVISA, and OpenChoice are registered trademarks of Tektronix, Inc.

VEKTREX is a trademark of VEKTREX Electronic Systems, Inc.

Tektronix, Tek, TekVISA, and OpenChoice are registered trademarks of Tektronix, Inc.

***NOTE: Software on the CD is provided AS IS with no warranties of any kind, specifically excluding WARRANTIES OF MERCHANTABILITY AND FITNESS FOR A PARTICULAR PURPOSE. Tektronix, Inc. assumes no liability of any kind for your use of this software***

# What are OpenChoice Solutions and Why Use Them?



OpenChoice Solutions are software resources that provide enhanced data analysis and networking abilities for your Tektronix instruments. These resources include software libraries, utilities, samples, and industry-standard protocols. They are included with your Tektronix oscilloscope.

OpenChoice Solutions enable you to run, directly on your Tektronix oscilloscope, both off-the-shelf and custom-written software. They enable you to communicate with your Tektronix oscilloscope over a network, using numerous connectivity protocols and physical interfaces, such as GPIB, Ethernet, RS-232, and shared memory. OpenChoice resources provide you with a high degree of flexibility to automate data acquisition, measurement, and analysis.

Examples of OpenChoice software include:

- The Tektronix Toolbar for Microsoft Excel (TekXL), which allows you to capture and graph oscilloscope data in MS Excel spreadsheets
- The Tektronix Toolbar for Microsoft Word (TekW), which allows you to capture and graph oscilloscope data in MS Word documents
- The Tektronix Report Generator, which allows you to generate custom reports, including oscilloscope setup, waveform, and measurement information

Other OpenChoice resources support industry standard programming interfaces, including the TekVISA API, VXI*plug&play* drivers, TekVISA Control (TVC) ActiveX and Interchangeable Virtual Instruments (IVI) drivers, allowing you to build custom solutions with commercially-available development tools and environments. Later sections of this article provide more information about programming interfaces and tools.

Different OpenChoice resources are available for current TDS1000, TDS2000, TDS3000B, TDS5000, TDS6000, TDS7000, and TDS8000 series oscilloscopes.

Table 1 below highlights specific TDS oscilloscope series, specific OpenChoice components mentioned in this article that they work with, and the mode of delivery.

**Table 1: OpenChoice Components and Compatible TDS Oscilloscopes**

<b>Component</b>	<b>Compatible with TDS1000, 2000, 3000</b>	<b>Compatible with TDS5000, 6000, TDS/CSA7000</b>	<b>Downloadable from <a href="http://www.tek.com">www.tek.com</a> (keyword: openchoice)</b>
Report Generator		✓	✓
IVI Drivers	IVI-C drivers	IVI-COM drivers	✓
TekVISA	✓	✓	✓
VXIplug&play	✓	✓	✓
Software Developer's Kit (SDK)	✓	✓	✓
TekXL Toolbar	✓	✓	✓ with TekVISA
TekW Toolbar	✓	✓	✓ with TekVISA
National Instruments LabVIEW	✓	✓	✓
MathWorks MATLAB	✓	✓	✓
Microsoft Visual Basic®, Visual C++®	✓	✓	✓

# Choosing OpenChoice Tools

OpenChoice tools provide you with a multitude of choices and options. To help you navigate through the alternatives and features, this article introduces some of the key features and facilities provided.

OpenChoice tools support both off-the-shelf software applications, which you can run as is, and custom software applications, which you design and code yourself.

## Using Off-the-Shelf Software Programs

Off-the-shelf software programs can solve your needs with only limited programming or training required. As such, they often can provide a lower cost solution than can software you write yourself. Tektronix provides several off-the-shelf software programs based on the Microsoft Office suite. These include the Tektronix Excel Toolbar, which copies your oscilloscope data into an MS Excel spreadsheet, and the Tektronix Word Toolbar, which copies your data into an MS Word document. Still another off-the-shelf software package is the Tektronix Report Generator, which lets you develop custom reports.

Availability of off-the-shelf software continues to expand as Tektronix and third party developers add products to the OpenChoice collection.

### Microsoft Office Solutions

Using the Tektronix Toolbar for Excel, a Microsoft Excel plug-in, you can dynamically import data into a spreadsheet as your Tektronix oscilloscope acquires it. The analysis capabilities of MS Excel can solve many oscilloscope data analysis requirements. Excel sits on the line between being a true off-the-shelf solution and being a programming environment. It provides many opportunities to program. However, compared to most pure programming languages, Excel is easier to learn to use — you may even be familiar with it already. Because the concept of the spreadsheet is relatively easy to grasp, you can concentrate more on your problems and less on developing software.

Advantages of Excel include:

- widespread availability
- relatively low cost
- good basic graphing

- widespread format compatibility
- relatively easy “what if” analyses where you can tweak the assumptions or output

Table 2 on page 5 provides more details on this toolbar.

Using the Tektronix Toolbar for Word, a Microsoft Word plug-in, you can dynamically import data into a Word document, as the data is produced by a Tektronix oscilloscope. Table 3 on page 7 provides more details on this toolbar.

The Tektronix Report Generator is an off-the-shelf software program that produces custom reports including oscilloscope data and setup information. Table 4 on page 9 provides more details on the Tektronix Report Generator.

Other off-the-shelf oscilloscope software programs from Tektronix include:

**Wavestar Software**

This Microsoft Windows 98/ME/2000/NT 4.0 application brings Tektronix oscilloscope measurement information to your PC desktop.

**Tektronix Application Software Options**

Application modules allow you to transform a Tektronix oscilloscope into a specialized analysis tool able to perform advanced jitter and timing analysis, 10/100/1000BaseT validation, microprocessor memory system verification, communications standards testing, disk drive measurements, video measurements, and power measurements.

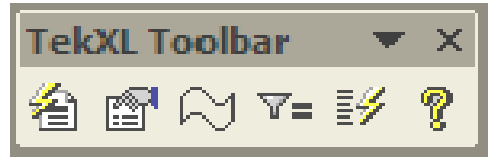
While these programs are widely used for oscilloscope solutions, sometimes an off-the-shelf program will not meet your needs. It may not meet engineering needs for unique problem requirement situations or strategic needs to maintain control of the software implementation. For many problems, a program you write yourself may be the best choice.

**The Tektronix Toolbar for Excel (TekXL)**

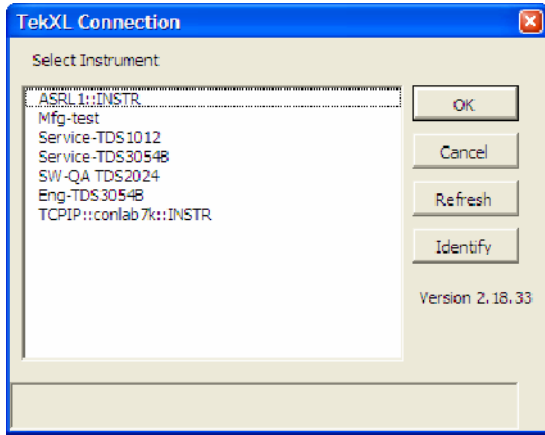
This toolbar, an add-in to Microsoft Excel, lets you capture and graph oscilloscope data in Microsoft Excel 2000 and 2002 spreadsheets.

**Table 2: The Tektronix Toolbar for Excel**

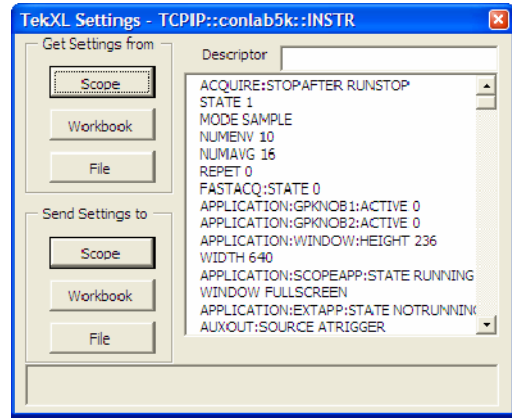
The Tektronix Toolbar for Excel, as shown to the right, appears inside your Microsoft Excel spreadsheet. To operate, click on the appropriate toolbar button. Use the resulting dialog box to make selections for the type of waveform and measurement data that you want to capture and automatically paste into Excel.



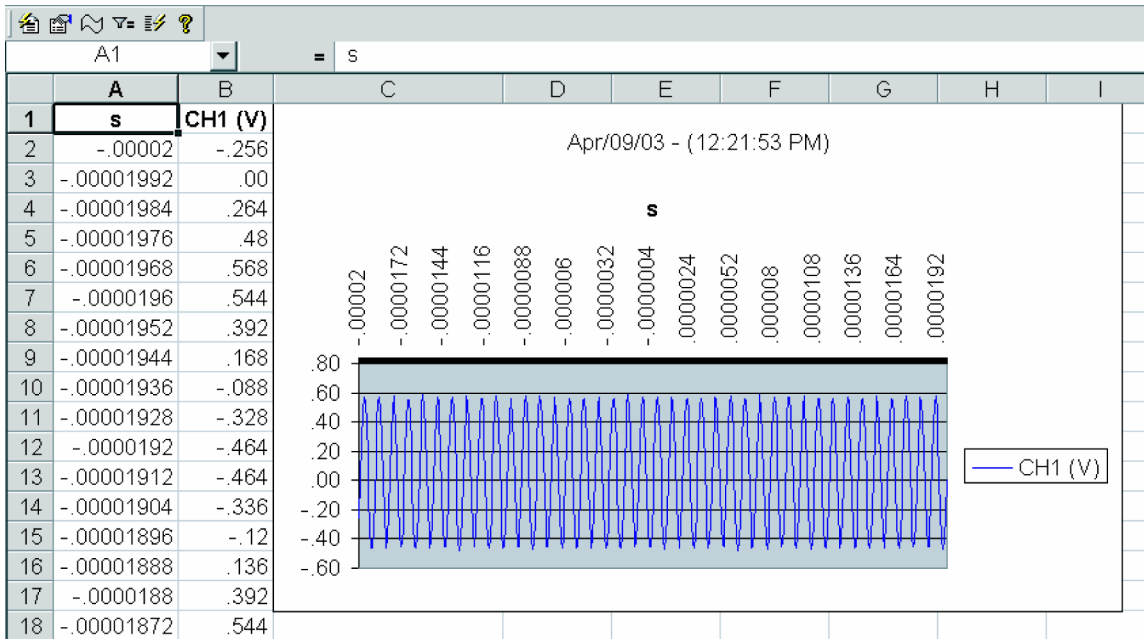
Clicking the connection button displays all available instruments, including remote instruments that have been connected.




Clicking the settings button displays and transfers settings between the oscilloscope and your computer.



Clicking the waveform button displays data and graphs the waveform, as shown below.

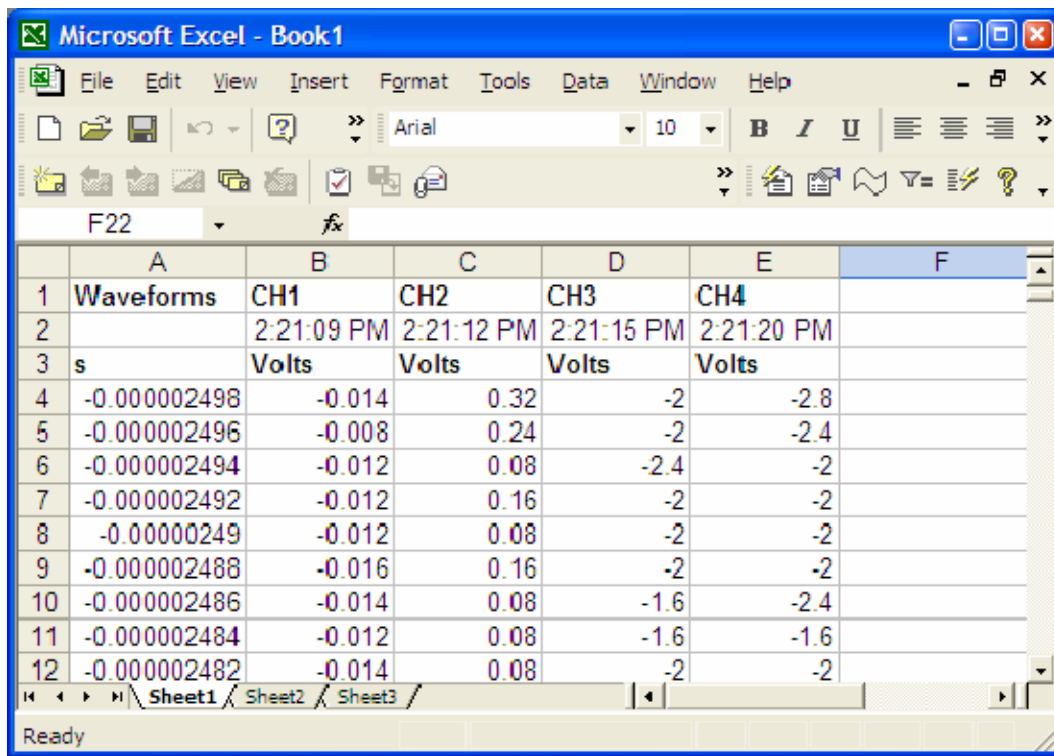


**Table 2: The Tektronix Toolbar for Excel (Cont.)**

 Clicking on the measurements button captures and displays single and repeated timed measurements.

A1 = Amplitude (Ch1)			
	A	B	C
1	<b>Amplitude (Ch1)</b>	<b>Frequency (Ch1)</b>	<b>Period (Ch1)</b>
2	1.032	1004300.0	0.0000009957661
3	1.024	1006200.0	0.0000009938571
4	1.016	1005800.0	0.0000009942522
5	1.04	1005700.0	0.0000009943182
6	1.032	1007100.0	0.0000009929412
7	1.032	1006400.0	0.0000009936029
8	1.016	1004200.0	0.0000009958289
9	1.024	1011300.0	0.0000009888235
10	1.032	1007000.0	0.0000009930682
11	1.024	1004700.0	0.0000009952941

 Clicking on the triggered captures button captures and displays waveform data and waveform measurements on a trigger.



The screenshot shows the Microsoft Excel interface with a table of waveform data. The table has columns for time, amplitude, and voltage for four channels (CH1, CH2, CH3, CH4). The data is captured at regular intervals, showing small amplitude variations over time.

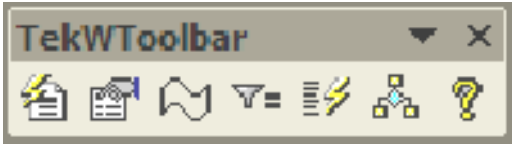

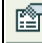
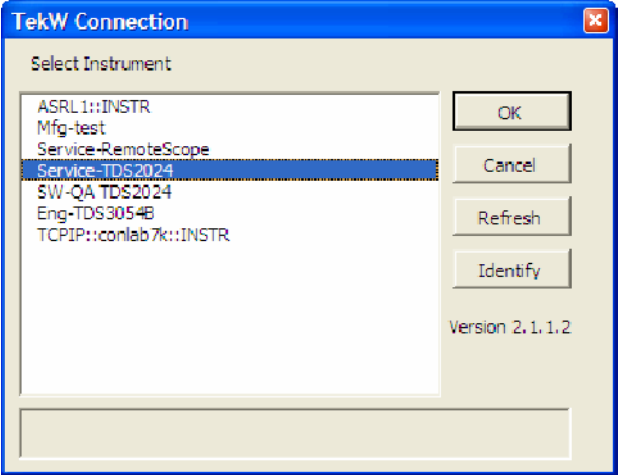
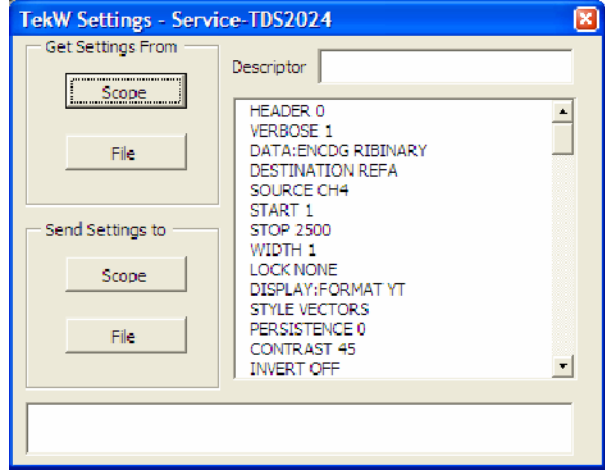
	A	B	C	D	E	F
1	Waveforms	CH1	CH2	CH3	CH4	
2		2:21:09 PM	2:21:12 PM	2:21:15 PM	2:21:20 PM	
3	s	Volts	Volts	Volts	Volts	
4	-0.000002498	-0.014	0.32	-2	-2.8	
5	-0.000002496	-0.008	0.24	-2	-2.4	
6	-0.000002494	-0.012	0.08	-2.4	-2	
7	-0.000002492	-0.012	0.16	-2	-2	
8	-0.00000249	-0.012	0.08	-2	-2	
9	-0.000002488	-0.016	0.16	-2	-2	
10	-0.000002486	-0.014	0.08	-1.6	-2.4	
11	-0.000002484	-0.012	0.08	-1.6	-1.6	
12	-0.000002482	-0.014	0.08	-2	-2	



**The Tektronix Toolbar for Word (TekW)**

The Tektronix Toolbar for Word, an add-in to Microsoft Word, lets you capture and graph oscilloscope data in Microsoft Word 2000 and 2002 documents.

**Table 3: The Tektronix Toolbar for Word**

<p>The Tektronix Toolbar for Word, as shown to the right, appears inside your Microsoft word document. To operate, click on the appropriate toolbar button. Use the resulting dialog box to make selections for the type of waveform and measurement data that you want to capture and automatically paste into Word.</p>	
<p> Clicking the connection button displays all available instruments, including remote instruments that have been connected.</p>	<p> Clicking the settings button displays and transfers settings between the oscilloscope and your computer.</p>
	

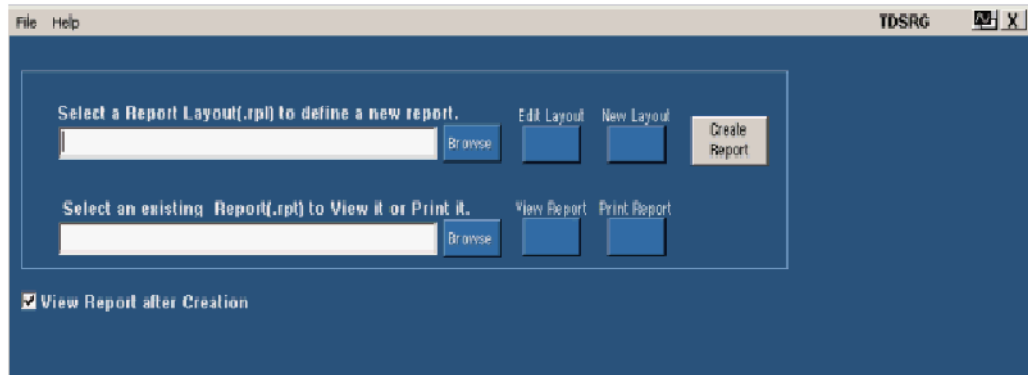
**The Report Generator**

The Report Generator, an MS Windows application, lets you create custom reports displaying your oscilloscope data. The Report Generator enables you to generate and print reports directly from the oscilloscope. It enhances the application capabilities by simplifying the process of creating and maintaining reports.

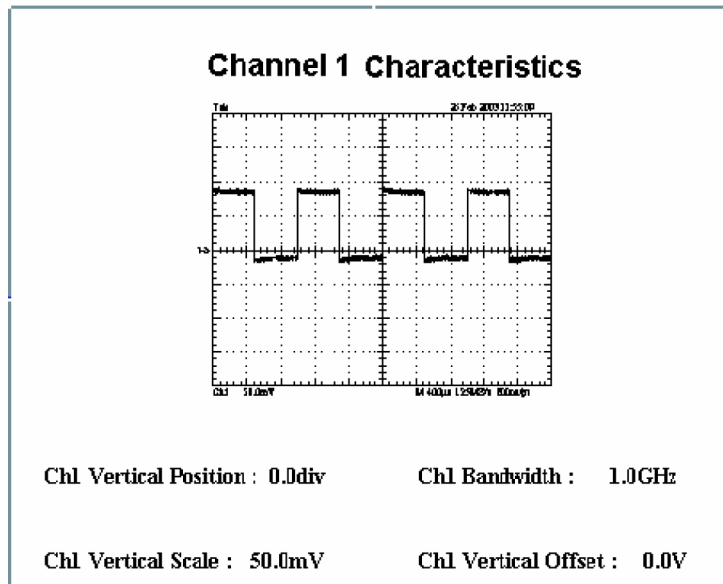
The Report Generator automates the process of compiling the test results and generating the reports.

It allows you to set up the layout using the factory default Layout or custom Layout. The Report Generator allows you to save files in the custom file formats such as **.rpl** or **.rpt** and the generated reports as an **.rtf** file. The Report Generator can be integrated with oscilloscope applications.

You create a new report or reuse an existing one from the start up screen.



You view your custom report from the report viewer.



# Writing OpenChoice Software

Designing and implementing your own software program using the OpenChoice tools allows you to tackle problems that off-the-shelf software does not address. Tektronix oscilloscopes support a variety of industry-standard, OpenChoice compatible programming environments and programmatic interfaces to help you write your own software program.

## Choosing a Development Environment

Examples of development environments in which to design and implement custom software programs include National Instruments LabVIEW, The MathWorks MATLAB, Microsoft Visual C++, Visual Basic, and VisualStudio.NET.

LabVIEW and Visual Basic are examples of visual software development environments that permit relatively rapid development of the applications. MATLAB and C/C++ are examples of software development environments that provide powerful problem-solving features.

You should choose your development environments for each application with care. Consider not only the intrinsic strengths of each environment, but also your existing knowledge of and access to each tool. The next section of this article describes some of the alternatives and trade-offs that might influence your choices of development environments from the large set of those available with OpenChoice.

Table 4 below lists some benefits of each of these development environment.

**Table 4: Benefits of Different Development Environments**

Development tool	Benefits
LabVIEW	<ul style="list-style-type: none"><li>■ Graphical widgets and icons</li><li>■ Comprehensive libraries for data collection, presentation, and storage</li><li>■ Relatively easy to learn</li></ul>
MATLAB	<ul style="list-style-type: none"><li>■ Mathematical analysis and simulation capabilities</li><li>■ Toolboxes for real-time control, signal processing, and statistics</li><li>■ C-style programming</li><li>■ Multiple-platform, multiple OS support</li></ul>

**Table 4: Benefits of Different Development Environments (Cont.)**

Development tool	Benefits
Visual Basic	<ul style="list-style-type: none"> <li>■ Custom user interfaces, read/write files, and plot results that are easier to develop than in many other languages</li> <li>■ A quicker learning curve than many other languages</li> <li>■ A relatively low cost in materials and training to begin using</li> </ul>
Visual C/C++	<ul style="list-style-type: none"> <li>■ Faster runtime execution speed than other languages (especially C)</li> <li>■ Ability to implement complex algorithms</li> <li>■ Availability of numerous specialized code libraries</li> <li>■ Availability of numerous engineers who know how to program C</li> <li>■ Object orientation in C++, which can permit faster development, especially with complex application interactions</li> <li>■ Support on multiple platforms and operating systems (Windows, Macintosh, UNIX)</li> </ul>

## Choosing a Programming Interface

After you decide which programming environment to use, you need to decide which programming interface to use. A programming interface is the software layer between the code that programmers write in the programming environment and the actual hardware. Tektronix provides several programming interfaces.

Tektronix programming interfaces include:

- TekVISA API: a ‘C’ library/DLL, which allows you to send and receive ASCII commands using C function calls
- VXI*plug&play* drivers: a ‘C’ library/DLL
- IVI drivers: a COM-based interface, which uses the IVI standard
- TekVISA ActiveX Control (TVC)

### How to Choose an Interface

You may choose an interface because you find it much easier to use in specific programming environments than others. For example, you may find it relatively easy to use TekVISA ActiveX Controls (TVC) with Visual Basic.

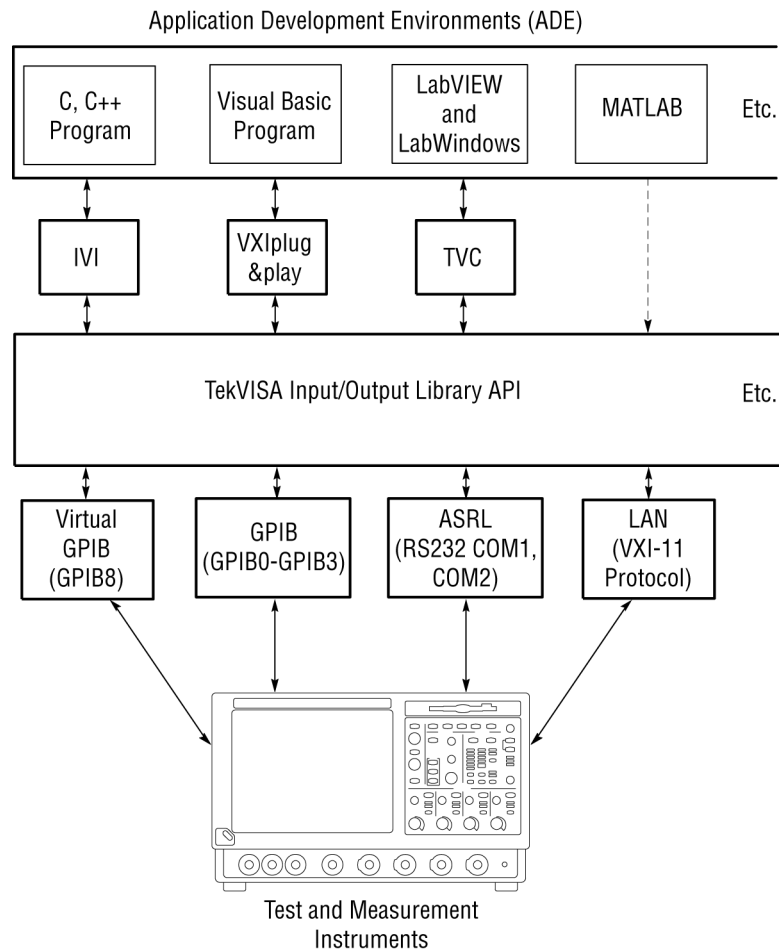
You may choose some interfaces based on your level of comfort with the oscilloscope-specific command set. For example, when you program the instrument using the TekVISA API library, you will send the ASCII commands

used in an oscilloscope-specific environment. Thus, it will help if you are already familiar with this command set. Other interfaces do not require you to understand the details of this command set.

All Tektronix open Windows oscilloscopes come with these programming interfaces and associated documentation on the oscilloscope.

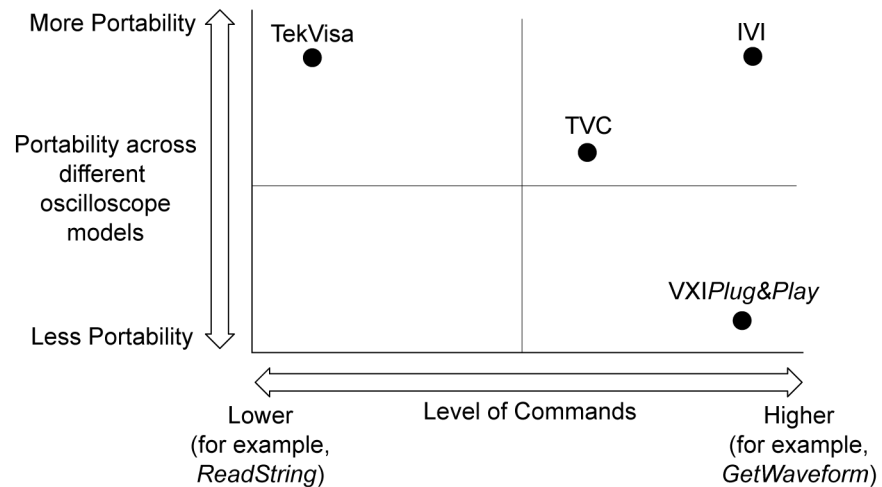
Also, you can directly program the oscilloscope using commands specific to each model oscilloscope. All Tektronix open Windows oscilloscopes come with documentation describing commands specific to that model. Frequently, this documentation comes in MS-Windows online help and electronic PDF format.

Figure 1 on page 12 shows the relationship between these different programming interfaces. Users can write programs in a variety of languages and use one of the programming interfaces. All the other interfaces are built on top of the TekVISA API, which provides the foundation for connectivity to the instrument. The TekVISA API sends device-specific commands over GPIB or LAN.



**Figure 1: The relationship between programming interfaces**

Figure 2 on page 13 shows some of the tradeoffs between these interfaces. The vertical axis represents the portability of a program across different Tektronix oscilloscope models and the horizontal axis represents the abstraction or level of commands provided by the interface.



**Figure 2: Tradeoffs between programming interfaces**

For example, the *VXIplug&play* driver is fairly low in the vertical axis (portability) because there is a different interface for each oscilloscope model and a client program would have to change if you used a different oscilloscope model. The *VXIplug&play* driver is high on the horizontal axis (command level) because it provides some higher-level functions like *GetWaveform*, which can send multiple oscilloscope-model specific commands to the oscilloscope and will return waveform data to the controller.

The TekVISA API is highly portable because a client program might not have to change when developers use a different oscilloscope model. The TekVISA API is fairly low on the X-axis, as it does not provide any higher-level functions. It just allows you to use common ASCII (GPIB) programming commands on multiple models of oscilloscopes that are compatible with the TekVISA API.

The IVI interface provides the best of both worlds: high-level functions and results in a program that is portable across all TDS5000, TDS6000, and TDS7000 Tektronix OpenChoice real-time oscilloscopes.

### **TekVISA API: (Tektronix Virtual Instrument Software Architecture)**

Test and measurement applications require some kind of I/O library to communicate with test instrumentation. As a step toward industry-wide software compatibility, the *VXIplug&play* Systems Alliance ([www.vxipnp.org](http://www.vxipnp.org)) developed a common I/O library called the *Virtual Instrument Software Architecture (VISA)*.

VISA provides a common standard for software developers so that software from multiple vendors, such as instrument drivers, can run on the same platform.

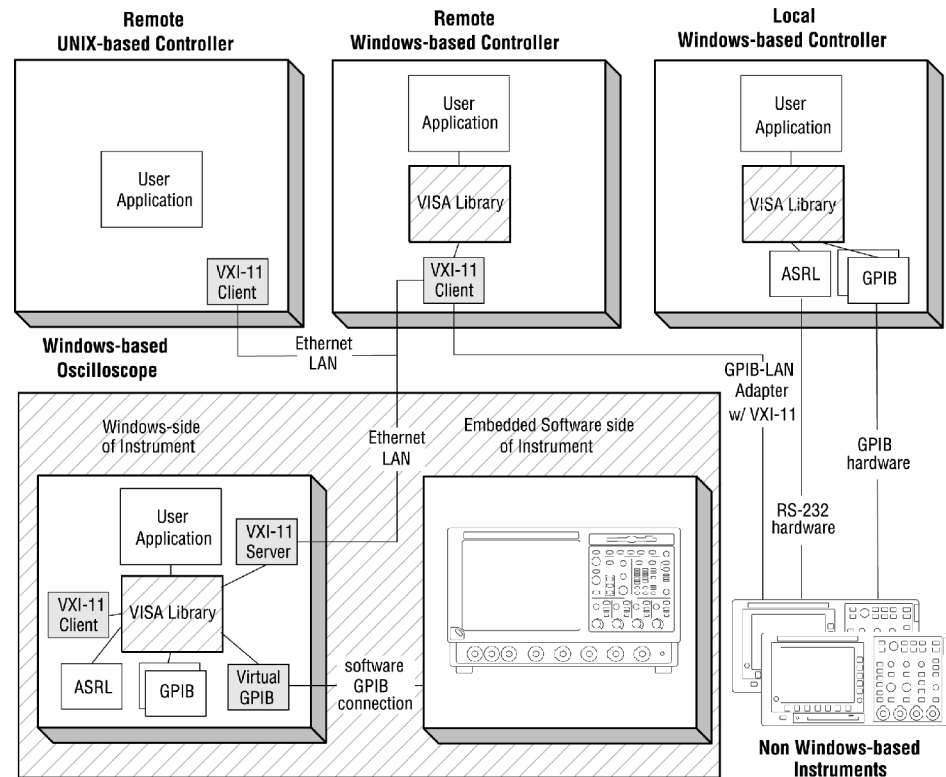
The TekVISA API is the Tektronix implementation of the Virtual Instrument Software Architecture (VISA).

The TekVISA API implements a subset of Version 2.2 of the VISA specification for controlling GPIB and serial (RS-232) instrument interfaces locally or remotely via an Ethernet LAN connection. The TekVISA layer provides the functionality needed to control and access the embedded software of Tektronix test and measurement equipment in the following ways:

- Using virtual GPIB software running locally on Windows-based instrumentation, such as TDS7000 and TDS8000 series oscilloscopes and the CSA7000 and CSA8000 series communications analyzers. The TekVISA API's Virtual GPIB provides a software bridge to and from the embedded oscilloscope software, permitting direct internal access to the oscilloscope for much faster acquisitions than conventional GPIB ports.
- Using physical GPIB controller hardware
- Using asynchronous serial connections (for non-Windows based oscilloscopes)
- Using Local Area Network (LAN) with VXI-11 protocol. VXI-11 is an industry standard protocol that can connect instruments over a LAN. A VXI-11 server runs on the instrument, and the VXI-11 client is installed on the remote PC controlling the instrument. The TekVISA API provides an implementation of the VXI-11 server and client. If you want to connect UNIX based systems to their Windows based oscilloscopes, you will need VXI-11 client software from another vendor (such as National Instruments) or to create your own. Although Windows-based instruments have a direct Ethernet connection, some non-Windows-based oscilloscopes may require a GPIB to LAN adapter.

Figure 3 on page 15 shows some different connection scenarios, such as programs running on the oscilloscope controlling the instrument and remote PCs running Windows or UNIX.





**Figure 3: Different connection scenarios**

The TekVISA API software comes standard in Tektronix open Windows-based oscilloscopes.

You can use a variety of programming environments including MATLAB, Visual Basic, LabVIEW and Visual C++ to program the instrument using the TekVISA API. Other sections of the OpenChoice SDK documentation provide more examples using these environments.

The TekVISA Programmer Manual includes a lookup reference section and a tutorial section with programming examples. You can find a copy either in the OpenChoice Software Developers' Kit, with your MS Windows TDS Oscilloscope product CD, or online at [www.Tektronix.com](http://www.Tektronix.com).

The actual commands sent by the TekVISA API are the same as those documented in the programmer manual for each oscilloscope. This means that a client software program written using VISA is portable across different oscilloscope models if the underlying oscilloscope-specific command set is the same. For example, since the TDS5000, TDS6000, and TDS7000 series use similar commands and the TDS8000 uses different commands, it is much easier to extend a TDS5000 program to work with the TDS6000 and TDS7000 series models than with the TDS8000 series models.

Two different implementations of VISA exist in the industry: VISA-C and VISA-COM. Tektronix offers a C-based VISA but not a COM-based one.

VISA defines an architecture consisting of many *resources* that make up the instrument functionality. Applications that use VISA access device resources by opening *sessions* to them. A *session* is a communication path between a software element and a resource. Every session in VISA is unique and has its own life cycle. VISA defines a *locking mechanism* to restrict access to resources for special circumstances. After establishing a session, an application can communicate with a resource by invoking *operations* associated with the resource or by updating characteristics of resources called *attributes*. A VISA system also allows information exchange through *events*.

VISA *Resource Manager* is the name given to the part of VISA that manages resources, including support for opening, closing, and finding resources; setting and retrieving resource attributes; generating events on resources; and so on. The VISA Resource Manager provides access to all resources registered with it. The *Default Resource Manager*, which is available after initialization, is used when you open resources, find available resources, or perform other operations on device resources.

Unique address strings called VISA descriptors identify VISA resources. These descriptors are also used by IVI and VXI*plug&play* drivers.

Here are some examples of these strings:

GPIB0::8::INSTR refers to the GPIB device on board 0 at primary address 8.

TCPIP::555.555.555.55::INSTR refers to a networked instrument with IP address 555.555.555.55

GPIB8::1::INSTR is used to identify the virtual GPIB connection, which is used when engineers run the program on the Tektronix open Windows oscilloscope.

The TekVISA installation includes a TekVISA configuration utility, which lets you find resources and add or remove network hosts, which use a VISA compliant instrument driver. You can also access a Call Monitor, which monitors all VISA calls. This can be a very useful debugging tool.

For more information, refer to the TekVISA Programmer Manual (071-1101-02) on the Reference section of the SDK or available for download at [www.Tektronix.com](http://www.Tektronix.com).

## **TekVISA Control (TVC)**

The TekVISA Control (TVC) is an ActiveX control that provides a wrapper around VISA. It provides some high-level functions like *GetWaveform*, which make it easy to transfer data from the oscilloscope in a Visual Basic or Visual C++ program. Unlike IVI or VXI*plug&play* drivers, it does not provide functions to access all of the oscilloscope's capability, and it relies on low level

commands like *ReadString* and *WriteString* to send commands to the oscilloscope.

You can also use the TVC to develop programs in Visual Basic for Applications (VBA), which comes with Microsoft Excel and Word applications. The Tektronix Excel Toolbar was developed in VBA and uses the TVC.

For more information about the TVC ActiveX control, refer to Chapter 3 and Chapter 4 of the book, *Oscilloscope Analysis and Connectivity Made Easy* (071-1046-01) and the *ActiveX Control Online Help*. Both are available on the OpenChoice Software Developers' Kit CD.

### **VXIplug&play Instrument Drivers**

*VXIplug&play* drivers are 'C' DLLs that provide a functional 'C' interface to instruments. Because these DLLs expose the functionality of the oscilloscope with a collection of C functions, you do not have to deal with the intricacies of the oscilloscope-specific command sets. Some functions (e.g. *SetTriggerLevel*, which sets the trigger level of a scope) are small wrappers around the corresponding oscilloscope-specific command. Other functions like *GetWaveform* provide a higher level of functionality and can send several oscilloscope-specific commands to the instrument.

*VXIplug&play* drivers conform to the specifications of the *VXIplug&play* alliance. Get the detailed specifications at [www.vxipnp.org](http://www.vxipnp.org). Since these are 'C' DLLs, use these drivers from a wide range of software development environments, including LabVIEW, LabWindows/CVI, and Visual C++. Tektronix has worked with National Instruments to provide customized LabVIEW wrappers for these drivers, which make them easy to use in LabVIEW.

Each Tektronix oscilloscope model has a different *VXIplug&play* driver. Unlike IVI drivers discussed later, these drivers do not standardize on different classes of instruments. For example, the interface to a different vendor's oscilloscope may be very different from the interface to a Tektronix oscilloscope.

### **IVI Drivers: (Interchangeable Virtual Instruments)**

IVI drivers are a new generation of drivers. They conform to specifications produced by the IVI Foundation ([www.ivifoundation.org](http://www.ivifoundation.org)). Unlike *VXIplug&play* drivers, they provide a standard interface to different classes of instruments, including oscilloscopes and spectrum analyzers.

There are two parts to an IVI driver, a class-compliant part which conforms to the class specification provided by the IVI Foundation and a specific part which provides access to extended capabilities provided by a specific instrument. These provide the developers with the ability to take advantage of specific unique capabilities of each vendor's instrument. An example is a special triggering mode of an oscilloscope.

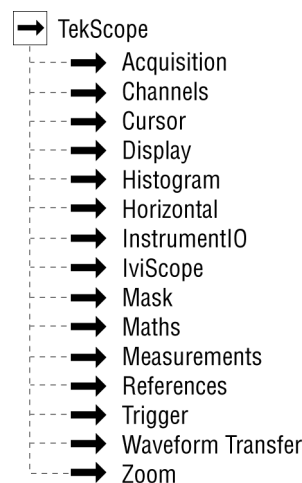
IVI drivers can provide increased features and better quality than earlier drivers. They include the ability to simulate instruments, automatically check ranges, and

multithread safety features. Multithread features allow the program to call a driver more than once, potentially increasing the speed of the program. Simulation features let the program work without having access to the actual hardware. This helps you create and debug your software even if the hardware is not available. You can also achieve better interchangeability of instruments from different vendors by programming only to the class specification.

IVI drivers can be implemented using C or COM technologies. IVI-C drivers expose a 'C' language. IVI-COM drivers have an API based on Microsoft COM technology. Tektronix has worked with National Instruments to provide IVI-C drivers for the TDS1000, TDS2000, and TDS3000 series oscilloscopes.

Tektronix provides a single IVI-COM driver for TDS5000, TDS6000, and TDS7000 series oscilloscopes. This driver implements the class-compliant part, which conforms to the IviScope specification provided by the foundation. It also provides a specific part, which provides access to all the extended capabilities provided by the instrument.

The following figure illustrates some of the COM interfaces provided by the oscilloscope portion of the driver:



**Figure 4: Some IVI COM interfaces**

Some of these interfaces, such as WaveformTransfer, provide high-level functions that make it very easy to acquire a waveform, save that waveform to a file, or copy it to the Windows clipboard. Other interfaces, such as Acquisition and Horizontal, provide fine-grained control over different oscilloscope attributes.

IVI-COM drivers require several shared components, which are provided by the IVI Foundation. These shared components are installed in all Tektronix open Windows oscilloscopes.

IVI-COM drivers integrate seamlessly with Microsoft environments like Visual Basic and Visual C++. You can also use the LabVIEW and MATLAB capability to call COM interfaces.

For more information, go to: [www.ivifoundation.org](http://www.ivifoundation.org).

## Designing Oscilloscope Programs

**Getting Started in OpenChoice Solutions** If you decide to design your own oscilloscope application program, this section is for you. You know what you want your program to do. Now, how do you actually write an oscilloscope software application? What tips and tricks might help you to make it work, run fast, and transfer data from the oscilloscope to the PC as quickly as possible?

If you are using the functions provided in IVI or *VXIplug&play* drivers described in the previous section, you will not have to use the device-specific commands described in this chapter. You can still apply some of the same general principles and use equivalent functions provided in these drivers. Of course, you still use these device-specific commands when you program using the TekVISA API.

To ensure that your oscilloscope software application will run correctly, follow these steps:

- Set up the oscilloscope.
- Retrieve the data.
- Analyze the data

### Set up the oscilloscope

**Initialize the scope settings.** The instrument needs to begin activities from a known state. The factory-initialized settings serve well for this task. Find the factory default settings listed in the programmer on-line guide or the user manual for an oscilloscope. The defaults set up the instrument by defining the vertical (volts/division), horizontal (time base, seconds/division), acquisition mode, and trigger settings. A simple way to do this is to send the ‘autoset execute’ command to the oscilloscope or to press the Autoset front-panel button. The oscilloscope will attempt to figure out the best settings for the signals sensed by the probe. Depending on the oscilloscope model, the channel used for autoset might be the lowest channel number that is on or the channel with the lowest frequency signal. If no channels are on, the autoset command may turn on the first channel it encounters that has a signal. The default for autoset is to select channel #1.

Usually, you will have some idea of the signal you are going to analyze with the oscilloscope, and you know which parts of the signal are of most interest to you. Autoset may not provide the appropriate representation of the signal of interest. In those cases, (and when autoset simply fails to display a signal) users will need to set the parameters differently than autoset did during its experiments. In other words, autoset may get the signal on the screen but users should be prepared to set vertical, horizontal, triggering and acquisition values that fit their current real world need.

Many Tektronix open Windows oscilloscopes use the device-specific *FACTory* command to set activities to the factory-initialized, known state.

**Set the vertical values.** In setting the vertical scale (per div value) of the specified channel, consider the dynamic range of the oscilloscope. As you use more of this range, you can take advantage of more accuracy. Thus, use logical volts/division settings. For example, let's consider the case where you are using the 5-volt square wave probe compensation signal. There are 8 vertical divisions on the screen. If you set the vertical scale to 1 volt/division, then the wave will nicely use most of the screen. It will fill 5 of the 8 vertical divisions.

You could use a smaller volts-per-division scale. However, then fewer pixels of display information would show for each waveform. The typical approach is to show as much resolution as is practical.

Many Tektronix open Windows oscilloscopes use the device-specific *CH<x>:SCALE* command to set the vertical scale (per div value) of the specified channel.

**Set the horizontal values.** For horizontal values, set the record length. This determines how many points you can store in a single acquisition. There is a limit. Once the oscilloscope reaches the limit, then it can't store new points without dropping off old ones. Also, the oscilloscope acquires the data on all selected channels synchronously.

Again consider the case where you are using the probe compensation signal. It has a 1-kHz square wave signal. There are 10 horizontal divisions on the screen. If two complete waveform cycles show, that would be 2 milliseconds of data. Since there are 10 divisions across the screen, each division should have

$$2 \text{ milliseconds} / 10 \text{ divisions} = 200 \text{ microseconds/division.}$$

You could use a smaller time per division scale; however, then fewer pixels of display information would show for each waveform. As with the vertical values, the typical approach is to show as much resolution as practical.

Many Tektronix oscilloscopes use the device-specific *HORizontal:RECOrdlength* to change the record length or

*HORizontal:MAIn:SAMPLERate* to change the rate at which samples are digitized.

**Set the trigger values.** Set the trigger type and level. Use the appropriate *TRIGger* command to get the job done the way you want it. Using this command, the trigger can be set to occur on: a rising or falling edge, on a level, on a logic pattern, on a pulse width, and so on. You should also select video triggering and then choose between fields, lines, or a specific line number.

Many Tektronix oscilloscopes use a variation on the device-specific *TRIGger* command to set the trigger values.

**Set the acquisition mode.** Oscilloscopes come with different acquisition modes, such as sample, peak-to-peak, and high resolution. In choosing the mode to select in your programs, consider the trade-off between effective resolution of your waveform data and the time it takes to transfer that data from your oscilloscope to your remote computer.

For example, your oscilloscope's sample mode may store each point of data in a single byte and thus your program may relatively quickly transfer data, but with the limitation that your program receives relatively few levels of resolution to analyze. In contrast, the high-resolution mode may store each point of data with multiple bytes. Thus your program may transfer data relatively slower, but with more levels of resolution to analyze.

For example, a program controlling many Tektronix oscilloscopes might use high-resolution sampling that acquires data with more detail (14 bits) but fewer data points in the same time period compared to a program controlling an oscilloscope using a sample mode with less detail (8 bits). Not all oscilloscopes use the same number of bits per point. The TDS/CSA8000, for example, uses 14-bits in its sample mode.

Understand the difference between equivalent time and real time acquisition. Equivalent time waveforms are the sum of many triggers. Real time is the result of a single trigger.

Many Tektronix oscilloscopes use the *ACQuire* commands to get the acquisition required for an application.

## **Retrieve the data**

You can get two things out of your oscilloscopes. You can get measurement data and waveform data. What the oscilloscope sees is the same whether the program was written in C, Visual Basic, or another language.

**Considerations for retrieving measurements.** There are two measurement types, immediate and not-immediate. Use non-immediate to display measurements on

the oscilloscope front-panel screen. Use `immediate` if you do not want the measurements displayed on the screen.

You can drive the waveform update rate faster if you use `immediate` measurements rather than displayed measurements because `immediate` measurements are computed only when needed.

Many Tektronix oscilloscopes use the device-specific `MEAS:MEAS` and `MEAS:IMMEDiate` commands for retrieving measurements. `MEAS:MEAS` displays measurements on the oscilloscope front-panel screen. `MEAS:IMMEDiate` does not display the measurements on the screen.

**Considerations for retrieving data.** There are two waveform query types. (If you use IVI and `VXIplug&play` drivers, you do not have to deal with the device specific commands described below because these drivers provide higher-level functions for getting the data.)

The first type of query returns a preamble followed by a binary block. The preamble contains data that users need to properly scale the data back into volts and seconds.

The second query type also returns a binary block. This type query returns only the binary block. It does not return a preamble. This makes it a little faster than the first type with the preamble and is typically used after the preamble values have been obtained one time. The preamble values will remain the same until the programs change the settings of the oscilloscopes. For many oscilloscope models, the data comes in a 2-byte format. The data will be in 1-byte or 2-byte per sample point format depending on the setting of the `DATA:WIDTH` parameter. When averaging or hi-resolution acquisition modes have been selected, the increased resolution is conveyed in the 2-byte data. In other acquisition modes there will be no significance in the use of 2-byte data.

The binary block structure consists of `#xyyynnnn.....LF`, where the `x` value represents the number of `y` bytes. The `y` bytes represent the record length. The `n` values are the digitizing levels for each sample and a linefeed character terminates the block.

With a 5,000-point record length, this means a 10,000-byte chunk of data. For example, if a user had a 10,000 point record length, then the block would be `#510000nnnnnnn.....LF`.

Not all oscilloscopes work exactly this way. The TDS8000 and CSA8000, for example, supports a four-byte, 32-bit data format.

Many Tektronix OpenChoice oscilloscopes use the device-specific `WAVFM?` query to return the preamble followed by the binary block. They use the `CURVE?` query to return the binary block without a preamble.



**Decide on the data path to use in retrieving data.** How do you want the data to flow from your oscilloscope to your custom application? With Tektronix open Windows oscilloscopes, such as the TDS5000, TDS6000, TDS7000, and TDS8000, you can run your applications on the computers built into your oscilloscopes to take advantage of the fast internal PCI bus. Alternatively, you can run your application on a separate computer connected to your oscilloscope by GPIB, RS-202, or Ethernet to take advantage of special processing or storage abilities of the remote machine.

**Decide on the type of synchronization to use in retrieving data.** Use synchronization to ensure that the acquisition process is completed before your program proceeds to the next task. Synchronization helps assure your program acquires the data you want it to acquire. Three common forms of synchronization methods are the \*OPC, SRQ, and BUSY methods. \*OPC and BUSY use polling that require the program to loop through repeated queries of the oscilloscope state. The SRQ method directs the scope to interrupt the application program rather than rely on repetitive polling. While the SRQ method is more difficult to program, it typically provides the most effective approach for programming multiple instrument systems.

\*OPC: great for single oscilloscope applications.

SRQ: great for multiple instrument networks. OPC tends to take up too much time in a multiple instrument setup.

BUSY: easy to program, but inefficient.

Refer to the specific oscilloscope programming guide for more details on each synchronization method.

**Error Handling.** When done retrieving the data, check for errors so that you can tell if the acquisition worked.

Typical error handling involves testing the status registers. To do this, have the programs send the oscilloscope an *\*esr?* query. If the programs return a non-zero value, this indicates that an event of some sort occurred. Now, decide how your program should handle the event. A simple to implement way is to display a message that says an error occurred. Perhaps, it can also refer the user to an appropriate specific oscilloscope programmer manual for more information on the error code. A more involved, but more helpful, message would tell the user exactly what message occurred. To do this, you can mask the error code through register templates to decode the specific event that occurred. You could then display the name of this specific event in a message to the user.

**Data Encoding.** One way to speed up the transfer of data from oscilloscopes to PCs is to choose the best format for the data. In choosing a format, you should consider that although oscilloscopes can format the data, your program typically

runs faster when you convert the data in the PC rather than in the oscilloscope. In other words, you should use binary formats for speedier operation.

You can format the data in several ways, such as in ASCII, RP binary, or RI binary format. You can obtain better transfer times by using a binary format, such as the RI one, which is the default on many oscilloscope models. However, to use the data in many applications, you must process this data back to an ASCII format after it arrives in the PC.

Speaking of binary formats, for many oscilloscope models, the difference between RP Binary and RI Binary is that RP Binary goes from 0 to 255 and RI Binary goes from -127 to +128.

For more information on supported data formats, refer to the *data:encdg* command in your instrument programmer guides.

Remember to match the decoding portion of your programs to the coding portion. In other words, if you change data encoding formats, then remember to change the decoding portion of the program as well.

### Analyze the data

Once you have collected a waveform in binary format and transferred it to your PC, you should convert the waveform data into volts. If you are using VXI-*plug&play* or IVI drivers, these calculations are done for you automatically.

To convert the waveform data into volts, use the waveform preamble from the appropriate waveform query (WAVFRM? for many Tektronix oscilloscopes).

In many Tektronix oscilloscopes, sample mode data contains 256 digitizing levels. Programs typically convert this to volts with the YOFF, YPOS, and YMULT values. YOFF defines the position of the waveform trace on the display. YPOS represents the DC offset.

For example, to convert RPBinary data format to voltage, the algorithm is:

$$\text{Voltage} = (\text{Digitizing Level} - \text{YOFF}) * \text{YMULT}$$

In these Tektronix oscilloscopes, each digitizing level represents one part in 256 if the data width is set to 1. The screen shows only 8 divisions of a total of 10.24 divisions. This results in 25 digitizing levels per division. Referring back to our example of measuring the 5-volt probe compensation signal with the represented by a value of 125. The YMULT should be 4.0e-2 or 40mV per digitizing level. If you don't use an offset and you do apply the scaling algorithm, the results will be:

$$5 \text{ volts} = (125 - 0) * 0.04$$

**Final Tips for Getting Accurate Measurements.** To ensure the oscilloscope provides as accurate as possible a representation of the signal for your analysis, you

should follow the procedure shown below. If you encounter difficulties, you should refer to the oscilloscope on-line help or user manual.

1. Allow the oscilloscope to warm up to proper operating temperature (usually no more than 20 minutes).
2. Perform a signal path compensation (SPC) to minimize DC inaccuracies caused by temperature variations or long-term drift. Most Tektronix oscilloscopes provide an automated SPC routine that you start by clicking a pull down menu or by pushing a couple of buttons. Disconnect all probes from all channels when performing SPC.
3. Connect the probe(s) to the channels they are going to use and check that the probe attenuation is what you want for your application. Some probes use a switch to change attenuation. Make sure your probes can handle the frequency of the signal you are interested in measuring. Also, check to be sure the attenuation on the oscilloscope for a particular channel is set to the same attenuation as that of the probe connected to that channel. Some Tektronix oscilloscopes have an automated method of verifying that the attenuation of the probe and the oscilloscope channel attenuation settings are the same. If they are not the same, the measurements results will not be meaningful.
4. Check the compensation of each probe. (If you move a probe to another channel, check the compensation for the new channel.) To check probes for testing purposes, you can connect them to the probe compensation signals on the front panels of most oscilloscopes. Again, some Tektronix oscilloscopes have a probe check feature that guides you through probe compensation activities and verifies that the probe is performing acceptably.
5. Remember to then connect the probe(s) to the device-under-test (DUT).



# Installing OpenChoice Solutions

Installing OpenChoice solutions is straightforward. Your open Windows oscilloscope typically comes from the factory with the various drivers and off-the-shelf solutions pre-installed. If needed, you can install OpenChoice drivers and off-the-shelf solutions on your MS Windows computer by downloading files from the [www.Tektronix.com](http://www.Tektronix.com) web site or running install scripts from the attached OpenChoice Solutions SDK CD.

You can install development environments for custom software development using CDs provided by the appropriate vendor. You will find 30-day evaluation versions of National Instruments LabVIEW and MathWorks MATLAB on current open Windows oscilloscopes.

Table 5 below lists various OpenChoice components and where to find them.

**Table 5: Where to find OpenChoice components**

Component	Install and uninstall on an open Windows oscilloscope	Install and uninstall on an MS Windows computer
Interchangeable Virtual Instrument (IVI) drivers	Installed from factory on TDS disk drive	Download from web or SDK CD
VXIplug&play drivers		
TekVISA Resource Manager Configuration Utility and TekVISA		Download from web. Single download for TekVISA, TekVISA Controls, TekXL, and TekW Toolbars
TekVISA Controls (TVC) ActiveX		
Tektronix Toolbar for Excel (TekXL)		
Tektronix Toolbar for Word (TekW)		
Report Generator		Download from web
National Instruments LabVIEW	30-day evaluation versions installed from factory on TDS disk drive	Purchase a copy from National Instruments
MathWorks MATLAB		Purchase a copy from MathWorks
Microsoft Visual Basic and Visual C/C++	Purchase a copy from Microsoft	

Table 6 below shows the default locations where various OpenChoice Solutions components are installed on the host hard disk.

**Table 6: Hard disk locations for OpenChoice components**

<b>Component</b>	<b>Location</b>
Interchangeable Virtual Instrument (IVI) drivers	C:\program files\IVI
VXIplug&play drivers	For MS WinNT PCs (includes XP), C:\VXIPNP\WinNT\TKTDS5k C:\VXIPNP\WinNT\TKTDS6k C:\VXIPNP\WinNT\TKTDS7k C:\VXIPNP\WinNT\TKTDS8k For MS Win9X PCs, C:\VXIPNP\Win95\TKTDS5k C:\VXIPNP\Win95\TKTDS6k C:\VXIPNP\Win95\TKTDS7k C:\VXIPNP\Win95\TKTDS8k
TekVISA Controls (TVC) ActiveX	For MS WinNT PCs (includes XP), C:\VXIPNP\WinNT\TekVISA\Bin For MS Win9X PC s, C:\VXIPNP\Win95\TekVISA\Bin
Tektronix Toolbar for Excel (TekXL)	For MS WinNT PCs (includes XP), C:\VXIPNP\WinNT\TekVISA\ExcelToolbar For MS Win9X PC s, C:\VXIPNP\Win95\TekVISA\ExcelToolbar
Tektronix Toolbar for Word (TekW)	For MS WinNT PCs (includes XP), C:\VXIPNP\WinNT\TekVISA\WordToolbar For MS Win9X PCs, C:\VXIPNP\Win95\TekVISA\WordToolbar

## Installing the TekVISA Resource Manager



The TekVISA Resource Manager Configuration utility helps you communicate with instruments, such as oscilloscopes, over an Ethernet LAN, GPIB, or serial connections. You use the Configuration utility to find, add, and remove network hosts (instruments). Once you add an instrument to the TekVISA configuration, this installation lets your computer communicate with the instrument.

---

**NOTE.** *If you are connecting to a network just to print screen hardcopy data, you do not need to install or configure TekVISA software.*

---

You need to install and configure the TekVISA API on each PC that communicates with Tektronix instrumentation using the VISA standard.

---

**NOTE.** *If you have already installed the TekVISA API from an earlier version of the Tektronix Software Solutions CD or Wavestar, you should uninstall that version first, and then reinstall the TekVISA API from the most recent CD.*

---

### Installing the TekVISA Resource Manager Configuration Utility

To find the appropriate software and install it on your MS-Windows computer, follow the instructions described in Table 7 below.

**Table 7: Installing TekVISA, TekXL, and TekW Software on a PC**

Alternative Locations for Finding the Software	Instructions for Installing the Software on a PC
The product software CD for a current MS-Windows oscilloscope	In your MS-Windows computer, select <b>Start &gt; Run</b> , browse the CD to the TekVISA folder, and run setup.exe.
The TDSPCS1 OpenChoice PC Communications Software CD	Follow the instructions in the CD's installation wizard.
The OpenChoice Solutions Software Developers' Kit CD	Click on the Developers' Kit CD's browser button for <b>Software Drivers</b> and then for <b>TekVISA</b>
The current TekVISA installation download from the Tektronix web site	Unzip the downloaded file in a temporary directory of your choice and run setup.exe.

### Running the TekVISA Resource Manager Configuration Utility

The TekVISA Resource Manager Configuration utility lets you find resource assignments and add or remove network hosts (instruments). Once you add an instrument to the TekVISA configuration, this installation lets your computer communicate with the instrument.

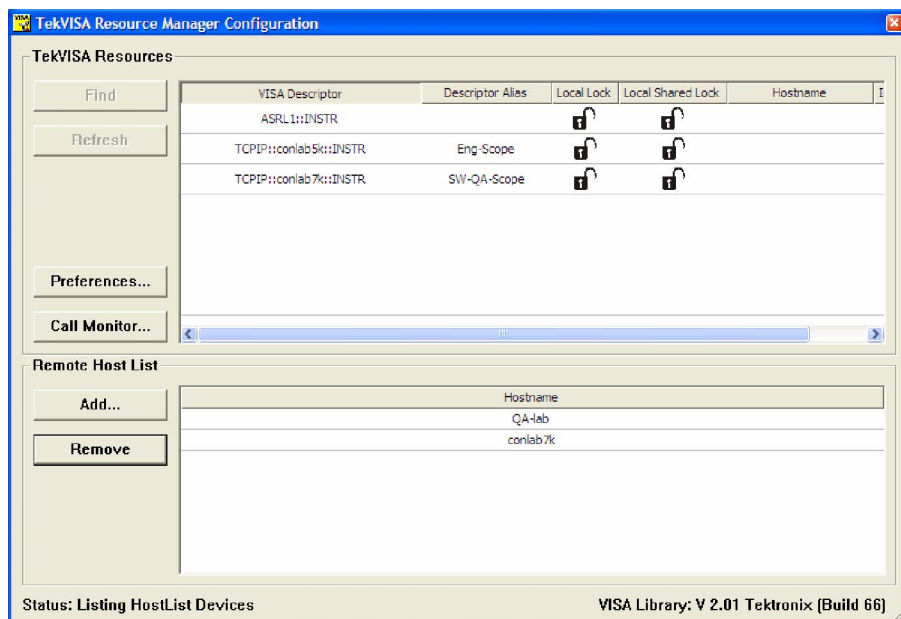
### Launching the TekVISA Resource Manager Configuration Utility

- Left click on the TekVISA Resource Manager Configuration utility icon in the system tray shown below.



- Alternatively, you can select, **Start > Programs > TekVISA > TekVISA Configuration.**

Either method will open a TekVISA Resource Manager Configuration utility window similar to the one shown below.



### Finding Resources

To search for new instruments, click **Find**.

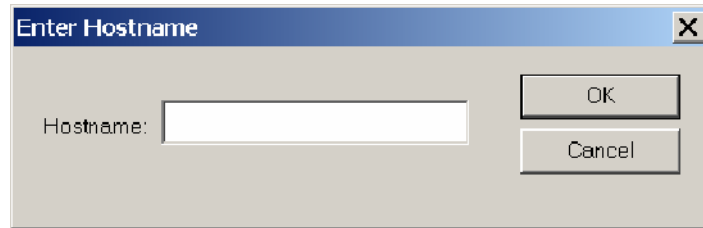
The TekVISA Resource Manager Configuration utility then rescans the VISA resources to find any new instruments.



**Adding a Remote Host**

To add a remote host (configure a VXI-11 client), follow these steps:

1. Click **Add**. The Hostname dialog appears, as shown below:



2. In the Enter Hostname dialog, enter the correct host name, or equivalent IP address, of the new interface. Use x if a field is unknown. For example, 555.555.555.x.
3. Click **OK** to add the host to the TekVISA Resource Manager Configuration utility's list.

**Deleting a Remote Host**

To delete a remote host (remove a VXI-11 client), perform these steps:

1. Select the host name to remove in the Remote Hosts list box.
2. Click **Remove**. The host name disappears from the Remote Hosts box and the TekVISA Resources List Box.

You can find further information on operating this window in the online help.

## Deployment Considerations

To realize the full benefits of LAN-based oscilloscope access, keep in mind the following considerations:

### Network Performance

Actual oscilloscope data transfer performance across a LAN will depend on your network's physical type and composition of hubs, switches, and routers. It may be necessary to upgrade network components in order to achieve optimal LAN access speeds.

### Network Security

As with any other computing resource attached to a network, take security precautions as appropriate to protect your LAN-enabled oscilloscope against unauthorized use.



**CAUTION.** *If your organization's LAN is connected to external networks such as the Internet, use of a properly configured network firewall is strongly recommended. The VXI-11 protocol and VXI-11 LAN Server do not include any security mechanisms.*

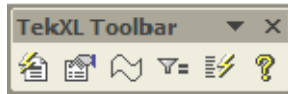
---

The vast majority of businesses and other organizations with Internet access already have network firewalls established. However, you may want to contact network security personnel to verify that your firewall blocks external access to the RPC port mapper service (TCP/IP port 111). VXI-11 clients use this network software service to connect to the VXI-11 LAN Server.

## Installing the Tektronix Toolbar for Excel (TekXL)

The Tektronix Toolbar for Excel, an add-in to Microsoft Excel, lets you capture and graph oscilloscope data in Microsoft Excel 2000 and 2002 spreadsheets.

The toolbar consists of a list of buttons as shown below. These let you connect to an instrument, transfer settings between the instrument and the computer, capture waveform screenshots, capture waveform numerical data, and capture measurements.



### Installing the TekXL Toolbar

To find the appropriate software and install it on your MS-Windows computer, follow the instructions described in Table 8 below.

**Table 8: Installing TekVISA, TekXL, and TekW Software on a PC**

Alternative Locations for Finding the Software	Instructions for Installing the Software on a PC
The product software CD for a current MS-Windows oscilloscope	In your MS-Windows computer, select <b>Start &gt; Run</b> , browse the CD to the TekVISA folder, and run setup.exe.
The TDSPCS1 OpenChoice PC Communications Software CD	Follow the instructions in the CD's installation wizard.
The OpenChoice Solutions Software Developers' Kit CD	Click on the Developers' Kit CD's browser button for <b>Software Drivers</b> and then for <b>TekVISA</b>
The current TekVISA installation download from the Tektronix web site	Unzip the downloaded file in a temporary directory of your choice and run setup.exe.

The Tektronix OpenChoice installer normally loads the TekXL files in these locations:

- For Windows 95 or Windows 98 systems:

*C:\VXIPnP\Win95\TekVISA\ExcelToolbar* directory

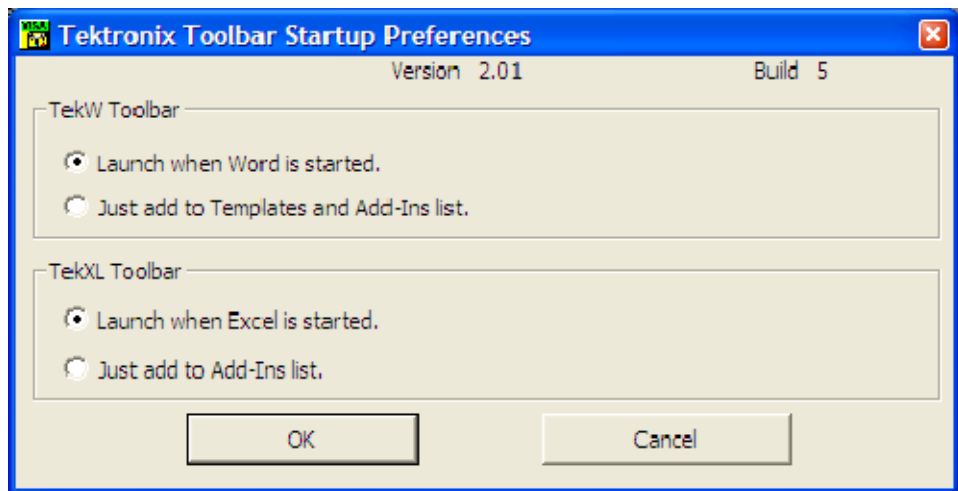
- For Windows NT, Windows 2000, or Windows XP systems:

*C:\VXIPnP\WinNT\TekVISA\ExcelToolbar* directory

The installation will also place a Toolbar Start Preferences button on your desktop, as shown below.



If you click on the button, the Tektronix Toolbar Startup Preferences window will appear, as shown below.



You can use this window to control the operation of the toolbars.

Click on **Launch when Excel is started** to have the TekXL Toolbar appear whenever you start MS Excel.

Click on **Just add to Add-Ins List** if you do not wish the TekXL Toolbar to appear whenever you start MS Excel. This will leave the **Tekxltoolbar** entry deselected on the Excel > **Tools** > **Add-Ins** list.

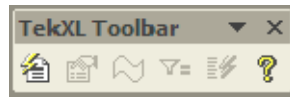
### Connecting the TekXL Toolbar to a TekVISA enabled Oscilloscope

Next, to connect to TekVISA enabled oscilloscopes:

In the TekXL toolbar, click the Connection button to specify the instrument with which you want to connect.

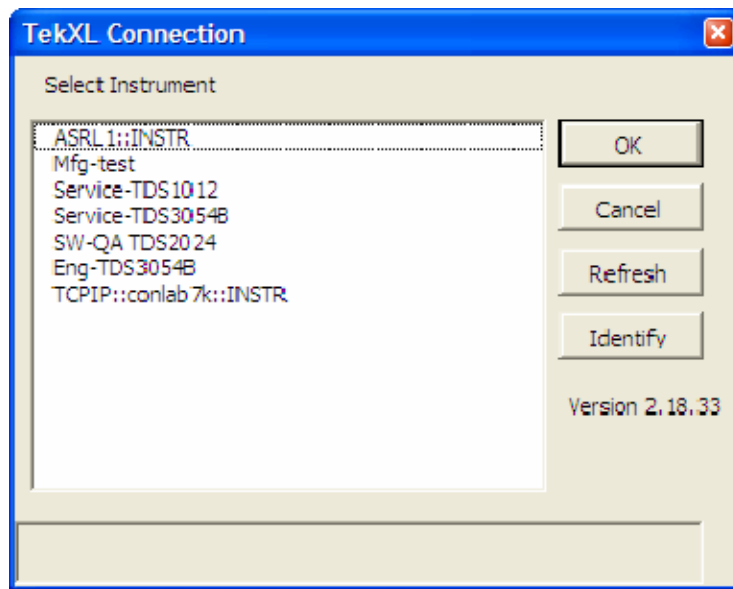
To select an instrument:

Click the Connection button. It is the functional, non-grayed out button on the left side of the toolbar.



The Connection window should appear and display all available instruments, including remote instruments that have been connected. The toolbar controls one instrument at a time.

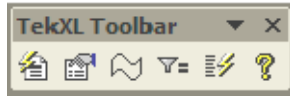
The figure below shows the Connection window.



To see the model number for an instrument, click its entry once, and then click the Identify button to the right. The model number will appear at the bottom pane of the Connection box, as shown in the figure below.



Either double-click the entry for the instrument that you wish to connect to or click the entry once and then click the **OK** button. A successful connection is indicated by the grayed-out, non-functional toolbar buttons becoming functional, as shown below.

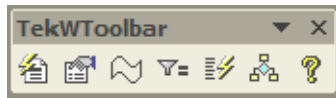


You can find further information on operating the toolbar in the online help.

## Installing the Tektronix Toolbar for Word (TekW)

The Tektronix Toolbar for Word, an add-in to Microsoft Word, lets you capture and graph oscilloscope data in Microsoft Word documents.

The toolbar consists of a list of buttons as shown below. These let you connect to an instrument, transfer settings between the instrument and the computer, capture waveform screenshots, capture waveform numerical data, and capture measurements.



### Installing the TekW Toolbar

To find the appropriate software and install it on your MS-Windows computer, follow the instructions described in Table 9 below.

**Table 9: Installing TekVISA, TekXL, and TekW Software on a PC**

Alternative Locations for Finding the Software	Instructions for Installing the Software on a PC
The product software CD for a current MS-Windows oscilloscope	In your MS-Windows computer, select <b>Start &gt; Run</b> , browse the CD to the TekVISA folder, and run setup.exe.
The TDSPCS1 OpenChoice PC Communications Software CD	Follow the instructions in the CD's installation wizard.
The OpenChoice Solutions Software Developers' Kit CD	Click on the Developers' Kit CD's browser button for <b>Software Drivers</b> and then for <b>TekVISA</b>
The current TekVISA installation download from the Tektronix web site	Unzip the downloaded file in a temporary directory of your choice and run setup.exe.

The Tektronix OpenChoice installer normally loads the TekW files in:

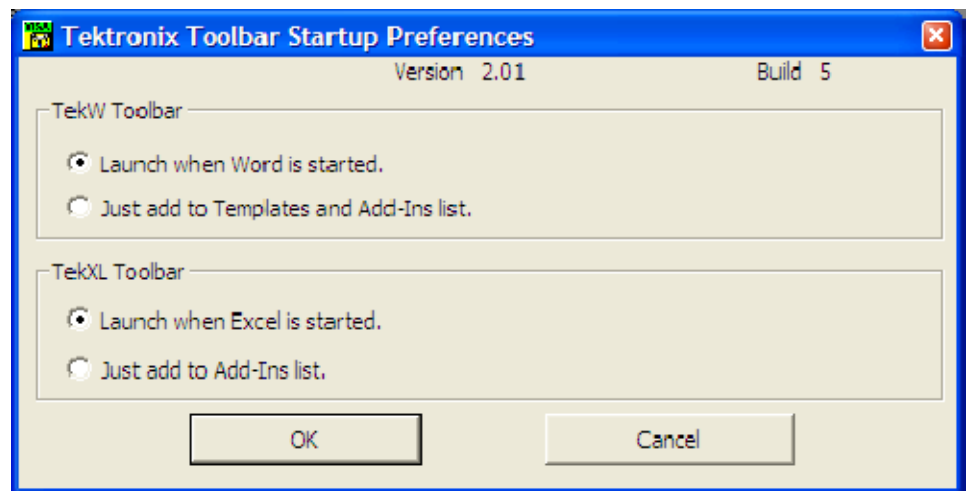
- For MS Windows 95 or MS Windows 98 systems  
C:\VXIPnP\Win95\TekVISA\WordToolbar directory
- For MS Windows NT, MS Windows 2000, or MS Windows XP systems

C:\VXIPnP\WinNT\TekVISA\WordToolbar directory

The installation will also place a Toolbar Start Preferences button on your desktop, as shown below.



If you click on the button, the Tektronix Toolbar Startup Preferences window will appear.

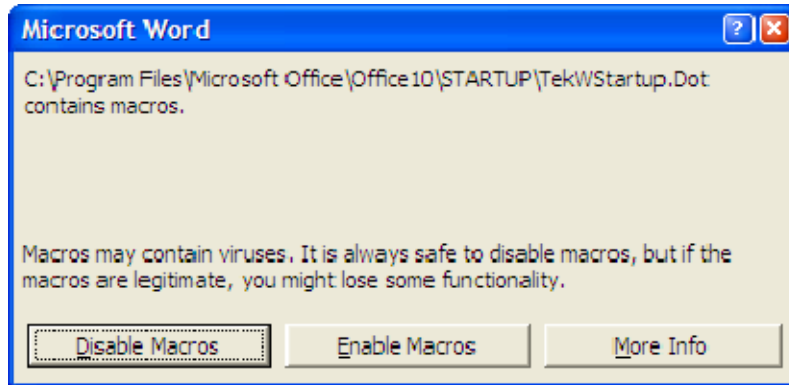


You can use this window, to control the operation of the toolbars.

Click on **Launch when Word is started** to have the TekW Toolbar appear whenever you start MS Word.

Click on **Just add to Templates and Add-Ins List** if you do not wish the TekW Toolbar to appear whenever you start MS Word. This will leave the **TekWStartup** entry selected and the **TekWToolbar** entry deselected on the **Word > Tools > Templates and Add-Ins** list.

When you start up Word, you may notice a Microsoft Word macros warning box, as shown below. This box may appear whether you selected **Launch when Word is started** or **Just add to Templates and Add-Ins List**.



One way to eliminate the macros warning box from appearing, for either setting, is to change your security settings to low by clicking on **Tools > Macro > Security > Low**.

Alternatively, you can eliminate the macros warning box from appearing in the situation where you do not wish the TekW Toolbar to appear at all by renaming or deleting the dot file mentioned in the box at the location listed. In the example above, the file name and location is: *C:\Program Files\Microsoft Office\Office 10\STARTUP\TekWStartup.Dot*.

### **Connecting the TekW Toolbar to a TekVISA enabled Oscilloscope**

Next, to connect to TekVISA enabled oscilloscopes:

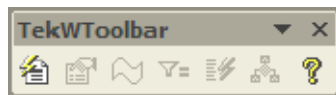
In the TekW toolbar, click the Connection button to specify the instrument with which you want to connect.

To select an instrument:

Click on the Connection button to display the Connection window. This window displays all available instruments, including remote ones. The toolbar controls one instrument at a time.

To select an instrument:

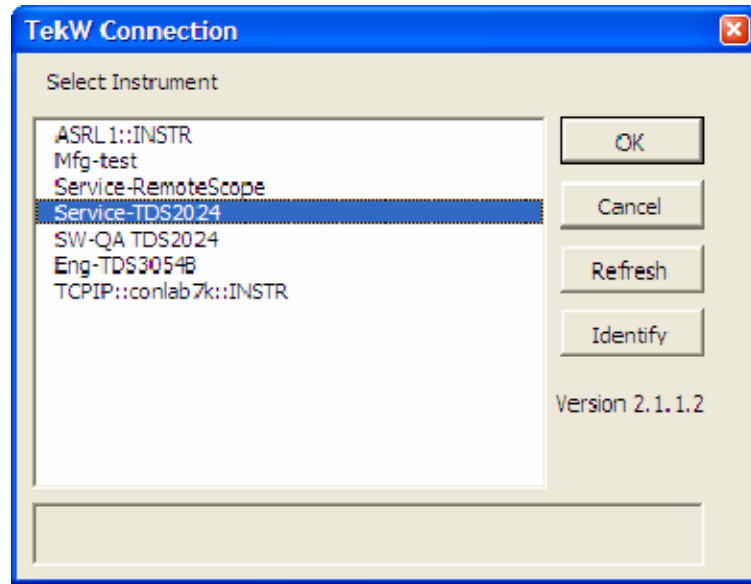
Click the Connection button. It is the functional, non-grayed out button on the left side of the toolbar.



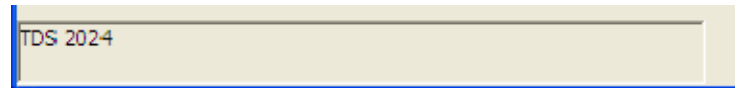
The Connection window should appear and display all available instruments, including remote instruments that have been connected. The toolbar controls one instrument at a time.



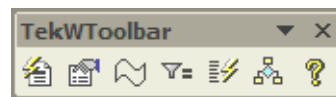
The figure below shows the Connection window.



To see the model number for an instrument, click its entry once, and then click the Identify button to the right. The model number will appear at the bottom pane of the Connection box, as shown in the figure below.



Either double-click the entry for the instrument that you wish to connect to or click the entry once and then click the OK button. A successful connection is indicated by the grayed-out, non-functional toolbar buttons becoming functional, as shown below.



You can find further information on operating the toolbar in the online help.



## For More Information

The information listed in table 10 below is available in the Tektronix OpenChoice Solutions Software Developers' Kit. You can download this information from [www.Tektronix.com](http://www.Tektronix.com).

**Table 10: Contents of the OpenChoice Software Developers' Kit CD**

Category	Document	Description
Overview	Getting Started	Describes what OpenChoice components are, why to use them, and how to install them
TDS Programmer	TDS200, 1000, 2000 Programmer (071-1075-00)	Describes native commands for the TDS200, 1000, 2000
	TDS3000 Programmer (071-0381-02)	Describes native commands for the TDS3000
	TDS5000 Programmer (OLH0190 V2.00)	Describes native commands for the TDS5000
	TDS6000 Programmer (OLH0197 V4.00)	Describes native commands for the TDS6000
	TDS/CSA7000 Programmer (OLH0140 V6.00)	Describes native commands for the TDS/CSA7000
	TDS/CSA8000 Programmer (OLH013902 V3.00)	Describes native commands for the TDS/CSA8000
Other Manuals	IVI Programmer (V1.0)	Describes IVI command set
	Oscilloscope Analysis and Connectivity Made Easy (071-1046-01)	Goes through example connectivity code.
	TekVISA Programmer (071-1101-03)	Describes the command set of the Tektronix implementation of VISA.
	TekVISA Reference (071-1104-00)	Provides a quick reference to the TekVISA command set.
	Report Generator	Describes how to operate the Report Generator application to create reports of oscilloscope data.

**Table 10: Contents of the OpenChoice Software Developers' Kit CD (Cont.)**

<b>Category</b>	<b>Document</b>	<b>Description</b>
Articles	TDS200, TDS1000, TDS2000, TDS3000 Command Comparison (001-1371-00)	Compares and contrasts the command sets for the TDS200, TDS1000, TDS2000 and TDS3000 oscilloscopes.
	TDS5000, TDS6000, TDS7000 Command Comparison (001-1371-00)	Contrasts the command sets for the TDS5000, TDS6000, and TDS7000 oscilloscopes.
	TDS5000, TDS6000, TS7000 Reference File Format (001-1378-00)	Describes the data format for waveforms acquired with TDS5000, TDS6000, TDS7000 oscilloscopes.
	IVI Class Interfaces (001-1304-00)	Overview of using IVI drivers, includes example code.
	IVI and VBA (001-1377-00)	Overview of using IVI drivers with Visual Basic for Applications. Includes example code.
	IVI and .Net (001-1374-00)	Overview of using IVI drivers with C#.net. Includes example code.
	IVI and LabVIEW (001-1376-00)	Overview of using IVI drivers with LabVIEW. Includes example code.
	IVI and LabWindows/CVI (001-1376-00)	Overview of using IVI drivers with LabWindows/CVI. Includes example code.
	Programming with LabVIEW (001-1367-00)	An introduction to programming OpenChoice oscilloscopes with LabVIEW. Includes an example.
	Programming with C++ (001-1369-00)	Describes different ways to program OpenChoice oscilloscopes with C++. Includes example code.
	Programming with MATLAB (001-1370-00)	Describes how to program OpenChoice oscilloscopes with MATLAB. Includes example code.
Programming with Visual Basic (001-1368-00)	Describes different ways to program OpenChoice oscilloscopes with Visual Basic. Includes example code.	
Primers	ABC's of Probes	A primer on oscilloscope probes in general.
	XYZ's of Oscilloscopes	A primer on oscilloscopes, in general.

**Table 10: Contents of the OpenChoice Software Developers' Kit CD (Cont.)**

<b>Category</b>	<b>Document</b>	<b>Description</b>
Software	IVI Drivers	Software modules to implement the interchangeable Virtual Instruments Foundation specs
	TekVISA API	A 'C' library/DLL, which allows you to send and receive ASCII commands using C function calls.
	VXIplug&play Drivers	Software modules to implement the VXI Systems Alliance specs.
	Report Generator	An application to design report templates that automate the acquisition and documentation of waveforms and measurements.
Links	Tektronix OpenChoice Solutions	The web page for OpenChoice Solutions: <a href="http://www.Tektronix.com/OpenChoice">www.Tektronix.com/OpenChoice</a>
	Interchangeable Virtual Instruments	The web page of the IVI Foundation, a consortium for promoting specifications for programming test instruments in a way that simplifies interchangeability, improves performance, and reduces the cost of program development and maintenance: <a href="http://www.ivifoundation.org">www.ivifoundation.org</a>
	MathWorks (MATLAB)	The web page for the maker of MATLAB, an environment for data analysis and visualization: <a href="http://www.mathworks.com">www.mathworks.com</a>
	Microsoft Developers Network	The web page for the Microsoft Developer Network: <a href="http://www.msdn.com">www.msdn.com</a>
	LabVIEW	The web page for National Instruments, the makers of LabVIEW, a graphical environment for rapidly creating test, measurement, control, and automation applications: <a href="http://www.ni.com">www.ni.com</a>
	VXIplug&play	The web page for the VXIplug&play Alliance, an organization that endorses and implements common standards and practices in both hardware and software. <a href="http://www.vxipnp.org">www.vxipnp.org</a>

